

DP STAR



DP I FOR:

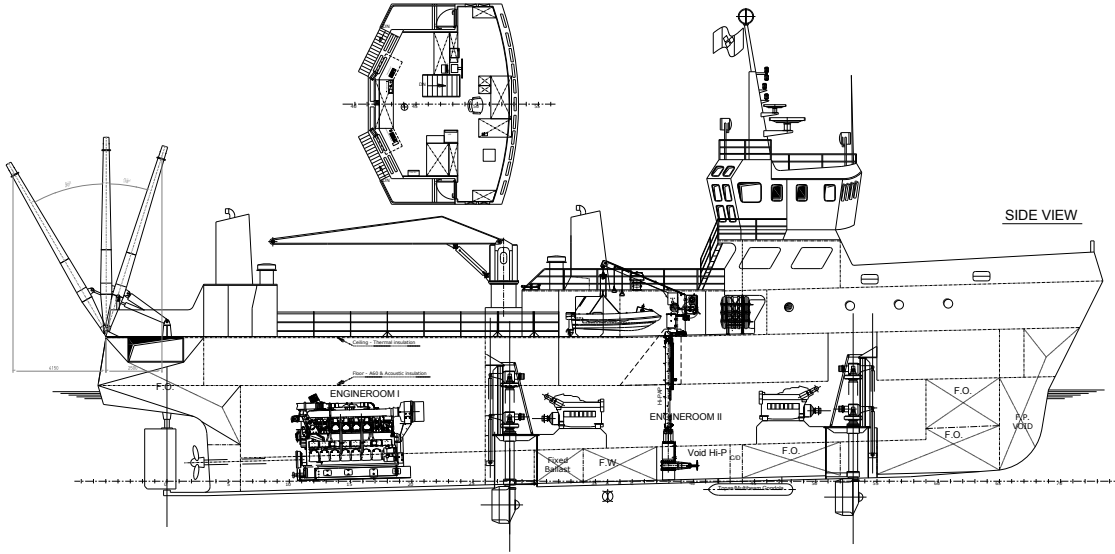
SURVEY, ROV, AIR DIVING AND MAINTENANCE SERVICES.

THE DP STAR HAS BEEN CONVERTED AND UPGRADED IN MARCH 2010 WITH FOLLOWING:

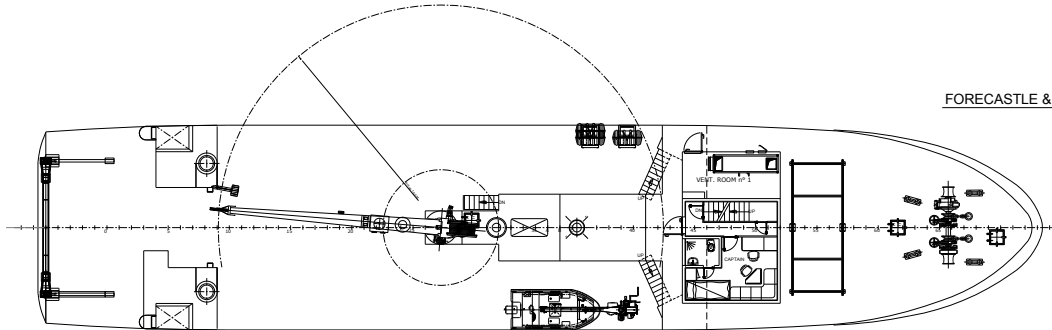
- **NEW ACCOMODATION**
- **NEW DP I System Kongsberg C.POS compact**
- **NEW DP Control System**
- **NEW Multibeam Kongsberg EM 710**
- **NEW Single Beam Kongsberg EA 400**
- **NEW Topas Kongsberg PS 40**
- **NEW Hi-PAP Kongsberg Hi-PAP 500**
- **Seapath 200 Kongsberg**
- **Sparker Squid 2000**
- **Energy source CSP-D 1200**

DP STAR

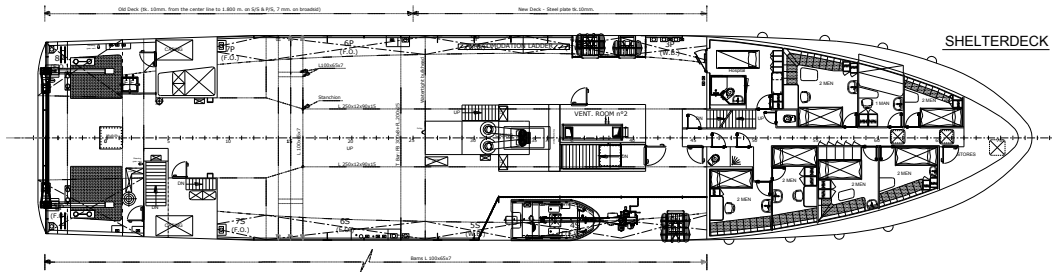
04: BRIDGE DECK



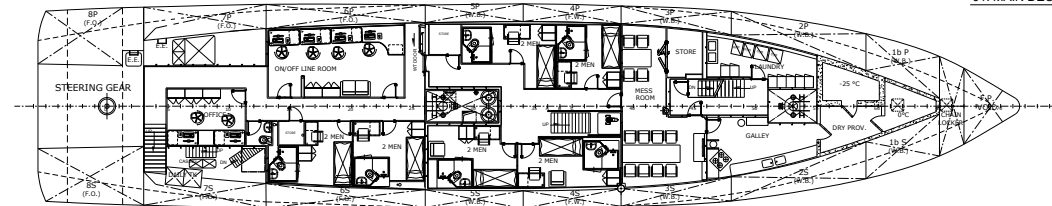
FORECASTLE & WINCHING DECK



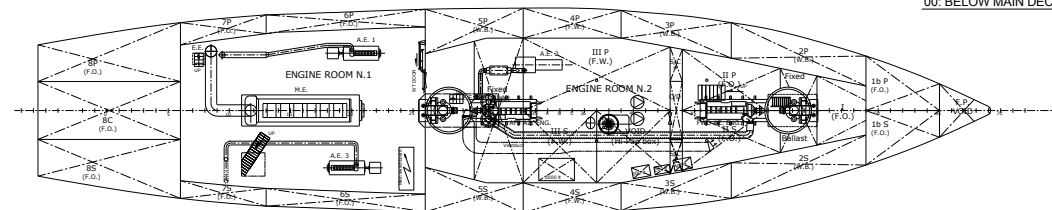
SHELTERDECK



01: MAIN DECK



00: BELOW MAIN DECK



DP STAR

Flag/Classification:

Flag St. Vincent & The Grenadines
Port of Registry Kingstown
IMO Number 7112187
Call Sign J8B3823
Classification Rina, ✘, Research Ship,
Unrestricted navigation,
Ice Class IC (max draught 4.3 m),
Dynapos AM/AT

Normal sailing
Surveying

abt 4.5-5 tons of gasoil per day
abt 2.5 3 tons of gasoil per day
Stand-by in harbour abt 1.2 tons gasoil per day

Accommodation:

Total berths including crew: 26
Single cabins 2
Double cabins 12

All cabins are air conditioning provided

Other facilities:

DP I System Kongsberg C.POS compact
DP Control System
Kongsberg EM 710
Multibeam Kongsberg EA 400
Single beam Kongsberg EA 400
Seapath Kongsberg Seapath 200
Topas Kongsberg PS 40
Hi-PAP Kongsberg Hi-PAP 500
Sparker Squid 2000
Energy Source CSP-D 1200

Mess/Day room 1

Main particulars:

Builder Kaarbos Mekaniske
Verksted A/S 70
Built 1971
Vessel Conversion 1984, 2010
LOA 45.15 m
LBP 39.65 m
Breadth 9.20 m
Depth 6.00 m
Summer Draft 5.127 m

Capacities:

Displacement 1138 t
Deadweight 507 t
Lightship 631 t
Gross Tonnage 498 t
Net tonnage 149 t
Diesel Oil 212 m³
Fresh water 75.4 m³
Water ballast 184 m³

Machinery and Propulsion:

Main engine(s) 1 X Deutz 8M545 @ 1500 BHP
Propulsion 1 x CPP
Thrusters 1 x Bow Retractable
Azimuth Unit @ 625 BHP
1 x Stern Retractable
Azimuth Unit @ 625 BHP
Main Generators 2 x 135 kVA
Port Generator 1 X 75 kVA

Deck machinery:

Cranes MCV 504-3.2-10 MOB 3200
(3.2 t @ 10 m)

A-Frame installed on February 2011
6 tons SWL
(see att. drawing on page 6)

Deck spaces: abt 175 + 41 m² total 216 m²

Fuel Consumption:

DETAILS BELIEVED TO BE CORRECT BUT
WITHOUT GUARANTEE

DP STAR



Deck view



Deck view



A-Frame view



Overhead view



Aft brige DP Console



Fwd brige Console

DP STAR



Online-offline survey room



cabin



Mess room

DP STAR A-Frame SWL 6

